

Dynamic Stability of Large Embankment Dams and a Case Study

Hasan Tosun¹

1- Full professor, Civil Engineering Department, Osmangazi University, Eskisehir, Turkey

Email: hasantosun26@gmail.com

Abstract

Dams constructed on the area with high seismicity have a high-risk potential for downstream life and property. It is a well-known fact that active faults, which are located close to dam sites, can induce to damaging deformation of the embankment as well as instability of the dam and strength loss of foundation materials. Direct fault movement across the dam foundation can create displacements, which result to more serious problems for embankments and their appurtenant structures. Especially active faults on or near dam sites can cause to damaging deformation of the embankment. Turkey has so many dams, which are under the influence of near source zone. One of them is Kockopru dam, which has an earthfill embankment with 74-m height from foundation, having a distance of 4.5 km from significant faulting system in the region. This study outlines stability analyses of large embankment dams located on active seismic area, discusses the experience on behavior of large embankment dams located on or near active faults as based on analytical analyses and introduces the results of the case study including a large dam, which is very close to an active fault system.

Keywords: Dam, dynamic stability, earthquake

1 INTRODUCTION

In general, strong ground shaking can result in the instability of the embankment and loss of strength at the foundations. Earthquakes can result in damages or failures for dam structures, while dams with large reservoirs can induce to earthquakes. Earthquake safety assessment is an important phenomenon in dam engineering and requires more comprehensive seismic studies for understanding the seismic behavior of dams subjected to severe earthquakes. It is a well-known phenomenon that earthquakes can result damages and failures for dams and their appurtenant structures. Wieland [1,2] points out the fact that seismic hazard and seismic design are important aspects for large dam projects. Case studies about the seismic performance of dams under large earthquakes are available in the literature [3-7].

Earthquakes damages to dams may result from direct fault movement across the dam foundation or from ground motion induced at the dam site by an earthquake located at some distance from the dam. There is also another fact that earthquake effect on dam structures mainly depend on their types. Tosun et al [8] stated that safety concerns for embankment dams subjected to earthquakes involve either the loss of stability due to a loss of strength of the embankment and foundation materials or excessive deformations such as slumping, settlement, cracking and slope failures. Safety requirements for concrete dams subjected to dynamic loadings should involve evaluation of the overall stability of the structure, such as verifying its ability to resist induced lateral forces and moments and preventing excessive cracking of the concrete [6].

This study summarizes stability analyses of large embankment dams located on active seismic area, introduces the experience on behavior of large embankment dams located on or near active faults as based on analytical analyses and discusses the results of the Kockopru dam, which is very close to an active fault system.

2 MATERIAL AND METHODOLOGY

For seismic hazard analysis of a dam site, the deterministic and probabilistic approaches are commonly used. The deterministic seismic hazard analysis considers a seismic scenario and includes four-step process. It is very simple procedure and gives rational solutions for large dams because of providing a straightforward framework for evaluation of worst ground motions. The probabilistic seismic hazard analysis is widely used and considers uncertainties in size, location and recurrence rate of earthquakes[9]. Due to the unavailability of strong motion records, various attenuation relationships were adopted to calculate the peak ground acceleration (PGA). ICOLD [10] states that the Maximum Credible Earthquake (MCE) is the largest reasonably conceivable earthquake magnitude that is considered possible along a recognized fault or within a geographically defined tectonic province. In this study, earthquake definitions given by FEMA [11] and DSI [12] were considered for seismic hazard analyses. Most of large dams in Turkey were analyzed by using these definitions in past.

The probabilistic hazard calculation was performed to obtain 5 percent damped elastic hazard pseudo-acceleration spectra and to generate the response spectrum compatible acceleration time histories for time domain analyses. The elastic hazard acceleration spectra on the basis of Boore et al [13] were obtained. For generating the acceleration time histories, a software program TARSCTHS was used [14].

Static and pseudo-static analysis were performed for the case study as based on the simplified Bishop method. A 2-D finite element model for the maximum section of the dam and soil profile including bedrock was developed by Plaxis software [15] for the dynamic analysis. Once the model was defined to represent the layered construction technique, then it was modified for dynamic loading conditions. Standard fixity elements were considered along the base and vertical sides of the model. It was assumed that the ground motion acts uniformly along the fixed boundaries.

3 CASE STUDY-KOCKOPRU DAM

The Kockopru dam is a zoned earthfill dam on the Zilan River of Van Inner Basin near Ercis County, located in the eastern portion of Turkey. It has a 73.5-m height from foundation (Table 1). Its crest length is 700 m. Kockopru dam with a total embankment volume of 2.02 million cubic meter is located on Zilan river of Van Inner basin. Its construction was finished in 1992. When the reservoir is at operation stage with maximum water level, the facility approximately will impound 86 hm³ of water with a reservoir surface area of 21 km². It was mainly designed to provide water for irrigating a land of 9 295 ha and producing electricity with installed capacity of 8.5 MW.

The Kockopru dam is a zoned earthfill dam with a central core material. The embankment is mainly composed of clayey material at center and coarse grained material on the shells. There is a transition section of sand between impervious and pervious zones in the embankment. The shells were supported with crushed rock materials on toes of embankment for both side. The side slopes of main embankment are 3.0H:1V for upstream and 2.5H:1V for downstream. The slopes of central clay are more stiff (1H:1V) and have same value. The main element of embankment is pervious sandy gravel. This material has good quality when considered abrasion and frost resistance.

Table 1. Properties of Kockopru Dam[16].

Properties	Value
Basin	Van Inner
River	Zilan
Location	East Anatolia
Completed Year	1992
Type	Earthfill dam
Purpose	Irrigation and energy
Volume of embankment	2 025 000 m ³
Crest Length	700 m
Height from river bed	51.0 m
Height from foundation	73.5 m
Slopes of embankments	
- Downstream	2.5/1 (Horizontal/Vertical)
- upstream	3.0/1 (Horizontal/Vertical)
Crest level	1 781 m
Normal Water level	1 778.5 m
Reservoir Area	21.0 km ²
Total reservoir capacity	86.0 hm ³
Active reservoir capacity	65.0 hm ³
Irrigation Area	9 295 ha

4 ANALYSES AND RESULTS

4.1 Seismic Hazard and Total Risk Analyses

The seismic hazard analysis was performed for the dam by means of two separate methods. The deterministic seismic hazard analysis shows that the PGA values for 50 percentile range from 0.239g to 0.325g while those for 84 percentile are between 0.405g and 0.594g. Their averages are very close to Boore's relationship. Therefore, they are considered as 0.283g and 0.481g for 50 and 84 percentiles, respectively. The seismo-tectonic model and earthquakes are given in Figure 1.

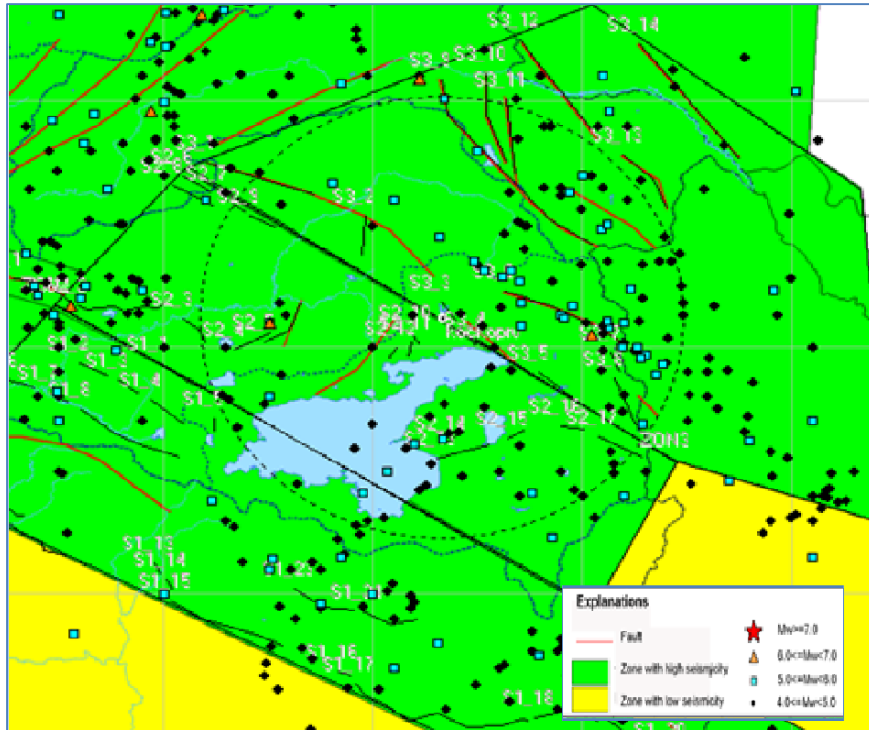


Figure 1. Seismo-tectonic Model and Earthquakes

The results of probabilistic seismic hazard analysis indicate that peak ground acceleration (PGA) changes within a wide range for all earthquakes levels. For OBE, MDE and SEE (for 2475 years), the PGA value was considered as 0.448 g, 0.570g and 0.750g, respectively.

As based on this study, Total Risk Factor (TRF) value is 197.68 and it is identified as risk class of III [17]. It means that it has “high risk” potential for downstream life and structures. According to the risk classification adopted by DSI [12], It is categorized as class III with high risk. The seismic hazard analyses performed throughout this study indicates that Kockoprü dam is one of the critical dams within the Van Inner Basin of Turkey.

4.2 Static and Pseudo-Static Analyses

Static and pseudo-static analysis are the simplest method to analyze the static and dynamic behavior soil embankments. The choice of seismic coefficients used in the analyses can be questionable. For this study slopes of embankment were studied for separate loading conditions. Along a critical slip surface through the embankment or through the embankment and its foundation, the total driving and total resisting forces are determined and the factor of safety against stability failure was calculated for each loading case. The calculated value should provide the minimum value given in the specification. For end-of-construction and operation stages, the static slope stability analysis is evaluated for downstream and upstream slopes separately. In the case

of operation downstream slope was analyzed considering the maximum water level, while upstream slope is evaluated under partial reservoir condition. The upstream slope was also analysed for rapid drawdown condition. The seismic stability of both slopes were also evaluated based on the peak ground acceleration for end-of construction and operation stages. Tosun [17] summarizes the upgraded principles of static and pseudo-static stability analysis for embankment dams, introduces most common approaches for determining the properties of fill materials and foundation soils and mentions the factor of safety concept for each case. For this study, earth fill stability of Kockopru dam have been investigated as defining a factor of safety for different loading condition by means of static and pseudo-static analysis (Table 2). At the beginning of this study, seismic coefficient was determined for pseudo-static analysis as based on the approach given in Tosun (2018). According to this approach seismic coefficient ranges from 0.15 to 0.20. For this study, it was selected as 0.20. Analyses have been executed by means of a software, namely GSTABIL7. The safety factors were calculated by the Modified Bishop Method. The value of seismic coefficient (k) was determined as 0.22 for limit equilibrium condition ($F_s= 1.0$). An example from analyses is introduced in Figure 2.

Table 2. Safety factors of pseudo-static analysis for separate loading conditions

Case	Description	Slope	Factor of Safety	
			Required	Calculated
I	End-of Construction	Downstream	1.3	1.99
		Upstream		2.80
II	Rapid drawdown	Upstream	1.1-1.3	2.16
				2.11
III	Operation	Downstream	1.4-1.5	2.01
		Upstream		2.20
IV	Earthquake	End-of-Construction	1.0	
		Downstream		1.22
		Upstream		1.62
		Operation		
		Downstream		1.20
	Upstream	1.05		

The minimum factor of safety was obtained as 1.05 for upstream slope at earthquake loading condition. However, local slope damages can be seen for downstream side even if it provides the required value given in the specification. From the results, it can be stated that the dam is almost safe during the earthquake when we use k-value, which is based on the conventional method [18]. However, it is not safe according to the pseudo-static analyses for earthquake loading conditions when considered the seismic coefficient based on the risk classification as given on DSI Specification [19].

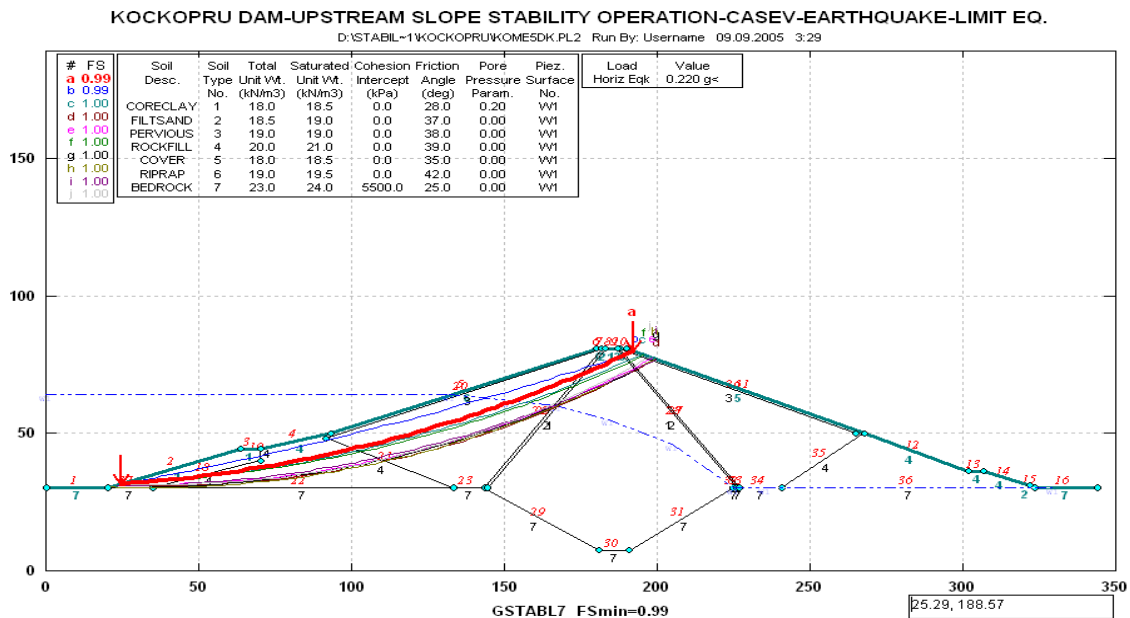


Figure 2. An example of slope stability analyses for Kockopru dam embankment

4.3 Numerical Analyses

The two-dimensional finite element model for the maximum section of the dam and soil profile including bedrock is given in Fig. 3. The model consisted of 5 466 nodal points, 9 948 stress points and seven cluster elements. Standard fixity elements were considered along the base and vertical sides of the model. It was assumed that the ground motion acts uniformly along the fixed boundaries. The Mohr-Coulomb model was selected to define soil properties for all models discussed here.

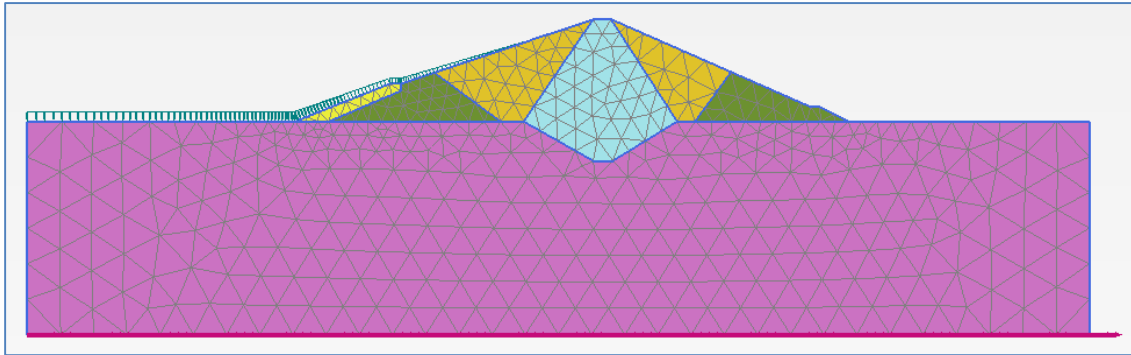


Figure 3. The Finite Element Model of the Embankment of Kockopru dam

The finite element model used in this study is composed of five different materials. The bedrock is also considered as a rigid element with high deformation modulus. The parameters used in the model were considered from the laboratory tests and the literature survey [20-22]. For the analysis, the deformation moduli of impervious zone and semi-pervious zone were taken into account as 50 000 and 85 000 kPa, respectively. Figure 4 shows loading conditions of the model. It means that it defines operation stage under steady state condition. The deformed mesh (scaled up 2 000 times) is introduced in Figure 5 for MDE loading condition.

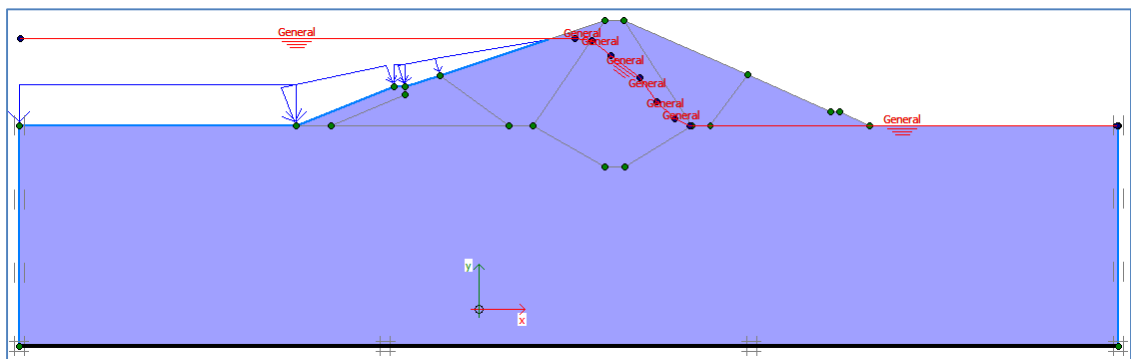


Figure 4. Loading conditions of the model for operation stage.

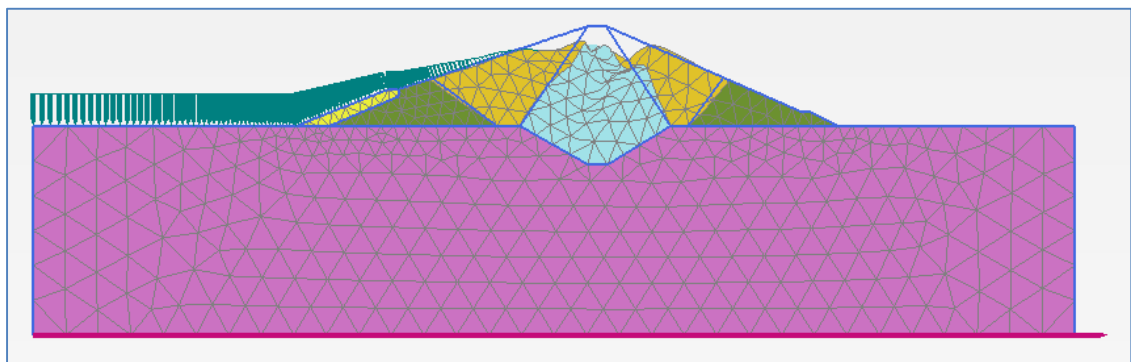


Figure 5. Deformed mesh for MDE loading (scaled up 2 000 times)

Figure 6 shows distribution of total vertical displacement of embankment after water impounding for MDE loading condition. The specification states that MDE loading condition should be considered for representing operation stage of embankment. The analysis indicates that maximum values of permanent displacement is 1.0 and 2.3 cm on the crest of embankment for OBE and MDE loading condition, respectively.

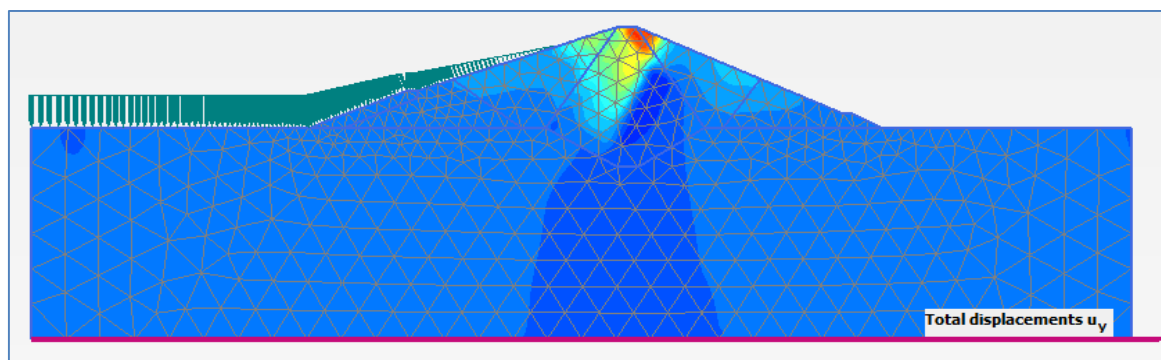


Figure 6. Distribution of vertical displacement for MDE loading condition.

5 DISCUSSION

The pseudo-static analysis indicates that both slopes of embankment are safe. The value of seismic coefficient was obtained as 0.22 for limit equilibrium condition. As a result of numerical analysis, maximum permanent settlement was predicted as 2.3 cm for dynamic loading of MDE level, when used the Mohr-Coulomb material type. The permanent vertical and horizontal displacement are too much when considered for soil-hardening material type. Stage for water impounding is taken into account for MDE analyses.

By finite element analysis, displacements are controlled for different sections. The distribution of horizontal and vertical displacements for a selected section can be obtained after OBE and MDE loading. For Kockopru dam vertical displacement increases towards the crest. However, maximum horizontal displacements occur on the mid-level of slopes.

The critical slip surfaces are generally passing through toe of embankment when executed analyses for total and effective stress conditions. Peak ground acceleration on crest (a_{maks}) was obtained as 0.60g from the analysis for MDE loading. The maximum seismic coefficient (k_{maks}) was determined as 0.22 from pseudo-static analysis. Their ratio (a_{maks}/k_{maks}) was calculated as 0.36. According to Makadisi and Seed [23], displacement range from 5 to 10 cm. These values obtained from empirical approximation confirm data given by numerical methods. The displacement values obtained from numerical method provides the limitations given in literature [11,19].

6 CONCLUSIONS

Kockopru dam site, which is located on one of the complicated geological and seismological region of Turkey, is under near field motion according to the seismic data. The slopes of embankment are safe when considered the pseudo-static analyses, when we use the conventional technique for obtaining the seismic coefficient. The dynamic analysis of two-dimensional finite element model of dam-foundation system indicates that the maximum value of displacement is only 2.3 cm on the crest under the loading of Maximum Design Earthquake. The permanent deformation for this model was obtained around 5 to 10 cm by means of semi-empirical methods. These results indicate that the embankment is safe for the loading of MDE and SEE condition. For SEE loading condition local sliding problem can occur on both slopes. However, the specified response spectrum modeling fault displacement should be considered for dynamic analyses performed by numerical methods.

7 REFERENCES

1. Wieland, M., (2013), Seismic design of major components. International Water Power and Dam Construction, February 16-19.

2. Wieland, M., (2014). *Seismic hazard and seismic design and safety aspects of large dam projects*. Second European Conference on Earthquake Engineering and Seismology, Istanbul, Aug. 25-29.
3. Seed, HB, Lee, KL, Idriss, IM and Makdisi, FI (1975), *The slides in the San Fernando Dams during the earthquake of February 9, 1971*. Journal of the Geotechnical Engineering Division, ASCE 101(GT7), 651–688.
4. Bell, ML and Nur, A (1978), *Strength changes due to reservoir-induced pore pressure and stresses and application to Lake Oroville*. J. Geophys. Res. 83, 4469– 4483.
5. Castro, G Poulos, SJ, Leathers, F (1985), *Re-examination of slide of Lower San Fernando Dam*. ASCE, Journal of Geotechnical Engineering 111. J. Geophys. Res. 83, 4469– 4483.
6. Jansen, R.B., (ed.) (1988), “*Advanced Dam Engineering for Design, Construction and Rehabilitation*”, Van Nostrand Reinhold, New York, 884p.
7. Tosun, H. (2015), “*Earthquakes and Dams*”, in Earthquake Engineering-Seismology to Optimal seismic design of engineering structures (edited by A. Moustafa), Intec Publication ISBN 978-953-51-2039-1.
8. Tosun, H., Zorluer, I., Orhan, A., Seyrek, E., Savaş, H. and Türköz, M. (2007), “Seismic Hazard and Total Risk Analyses for Large Dams in Euphrates Basin, Turkey”. Engineering Geology, 89, 155-170.
9. Kramer, SL (1996). *Geotechnical Earthquake Engineering*. Prentice-Hall, Upper Saddle River, NJ. 653 pp.
10. ICOLD (2016), “*Selecting Seismic Parameters for Large Dams-Guidelines*”, ICOLD Bulletin 148.
11. FEMA, (2005), “*Federal Guidelines for Dam Safety-Earthquake Analyses and Design of Dams*”.
12. DSI (2012). *Selection of Seismic Parameters for Dam Design*. State Hydraulic Works, Ankara, 29 p (in Turkish).
13. Boore, DM., Joyner, WB. & Fumal, TE. (1997), *Equation for Estimating Horizontal Response Spectra and Peak Acceleration from Western North American Earthquakes*. A Summary of recent Work. Seismological Research Letters, V.68, N.1, January /February, 128-153.
14. Papageorgiou, A., Halldorsson, B. and Dong, G. (2000), “*Target Acceleration Spectra Compatible Time Histories*”, University of Buffalo, Dept. of Civil, Structural and Environmental Engrg., NY.
15. Plaxis, (2008), Plaxis “*V8 Professional Version-User Manual*” (Edited by Brinkgreve, R.B.J., Broere, W., and Waterman, D.), Netherlands.
16. DSI (2016). *Dams of Turkey*. TR-COLD, Ankara, 602 p.
17. Bureau, GJ. (2003) *Dams and Appurtenant Facilities in Earthquake Engineering Handbook edited by Chenh, W.F and Scawthorn, C*. CRS press, Bora Raton 26.1-26.47.
18. Tosun, H. (2018), *Input Parameters and Main principles of Slope Stability Analysis for Embankment Dams*. 5th International Symposium On Dam Safety, 27-31 October 2018, İstanbul. (in Turkish)
19. DSI (2012), *Design Guide for embankment dams*. State Hydraulic Works. Ankara, 142 p (in Turkish).
20. Seed, H.B., Wong, R.T., Idriss, J.M. and Tokimatsu, K. (1984), “Moduli and damping factors for dynamic analysis of cohesionless soils”, Report No: UCD/EERC-84-14, Earthquake Engineering Center, University of California.
21. Hunter, G. and Fell, R. (2003), “Rockfill modulus and settlement of concrete faced rockfill dams”, J. Geotech. And Geoenviron. Engrg. 129, 2003.
22. Brenner, R.P., Wieland, M. and Malla, S. (2005), “Large-diameter cyclic triaxial tests for seismic safety Assessment”, 16 th ICSMGE, Osaka.

23. Makadisi, F.I and Seed, H.B. (1978), “Simplified procedure for estimating dam and embankment earthquake-induced deformations”, J. Geotech. Eng. Div. ASCE 104(7): 849–867.